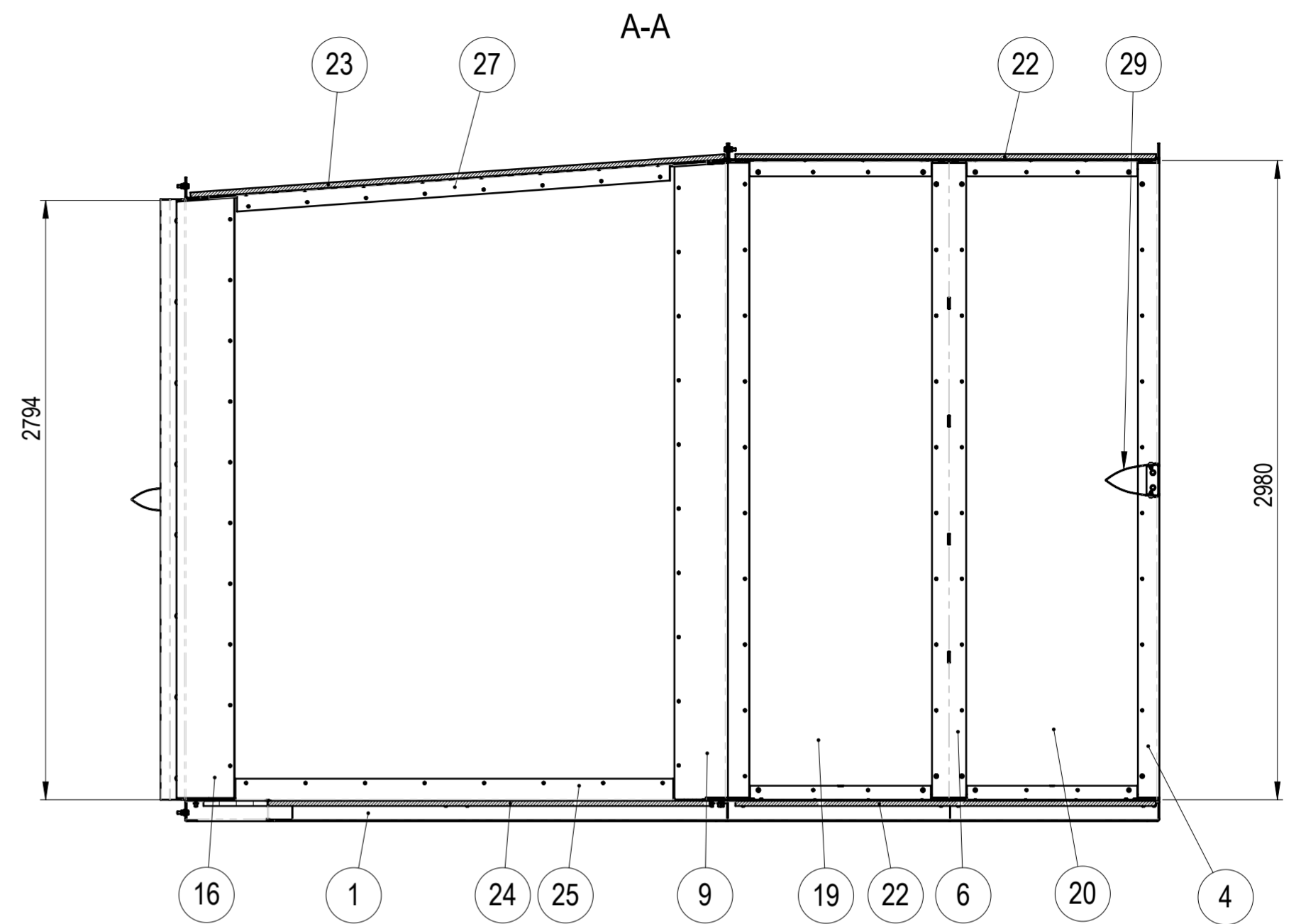
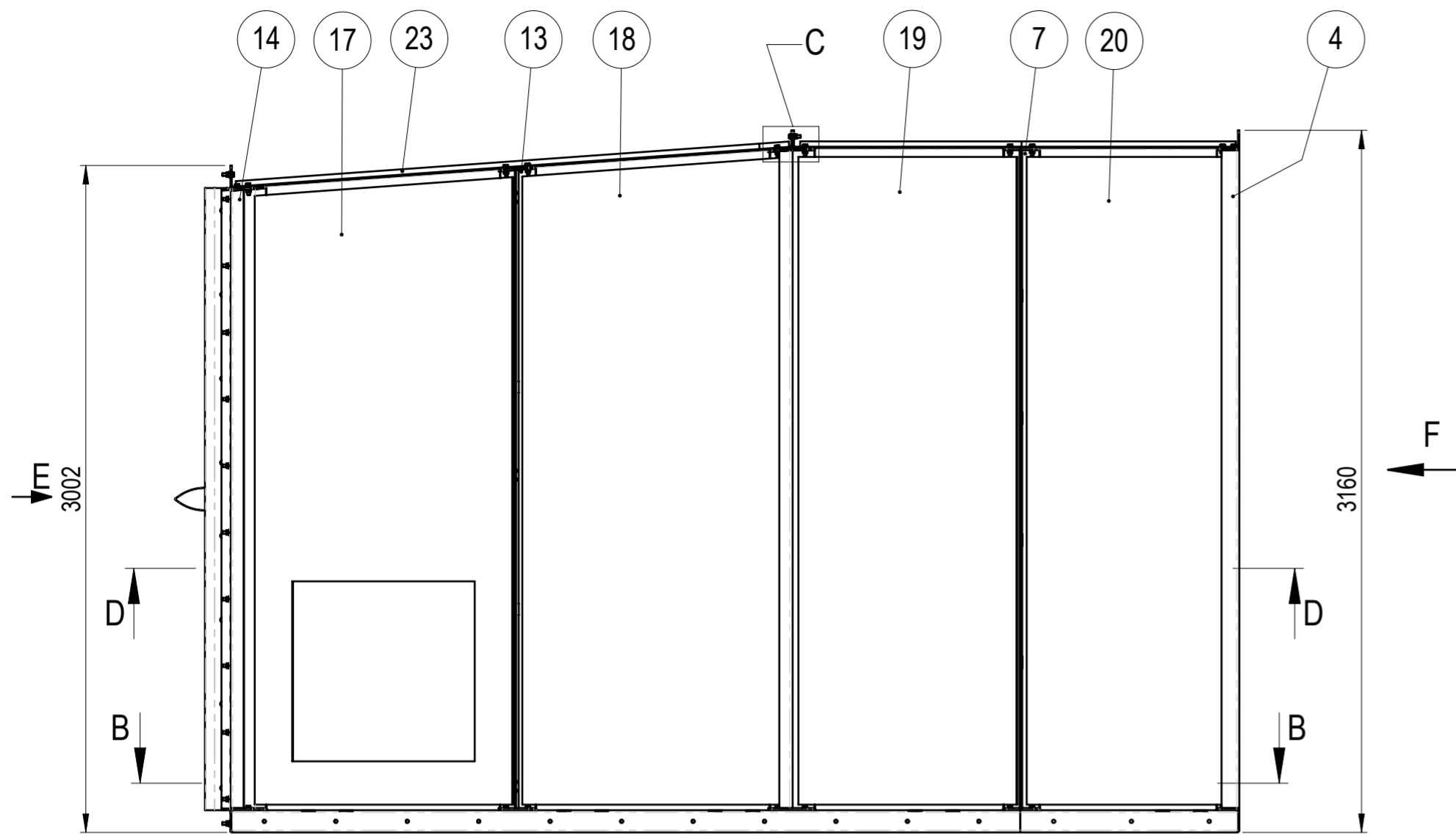
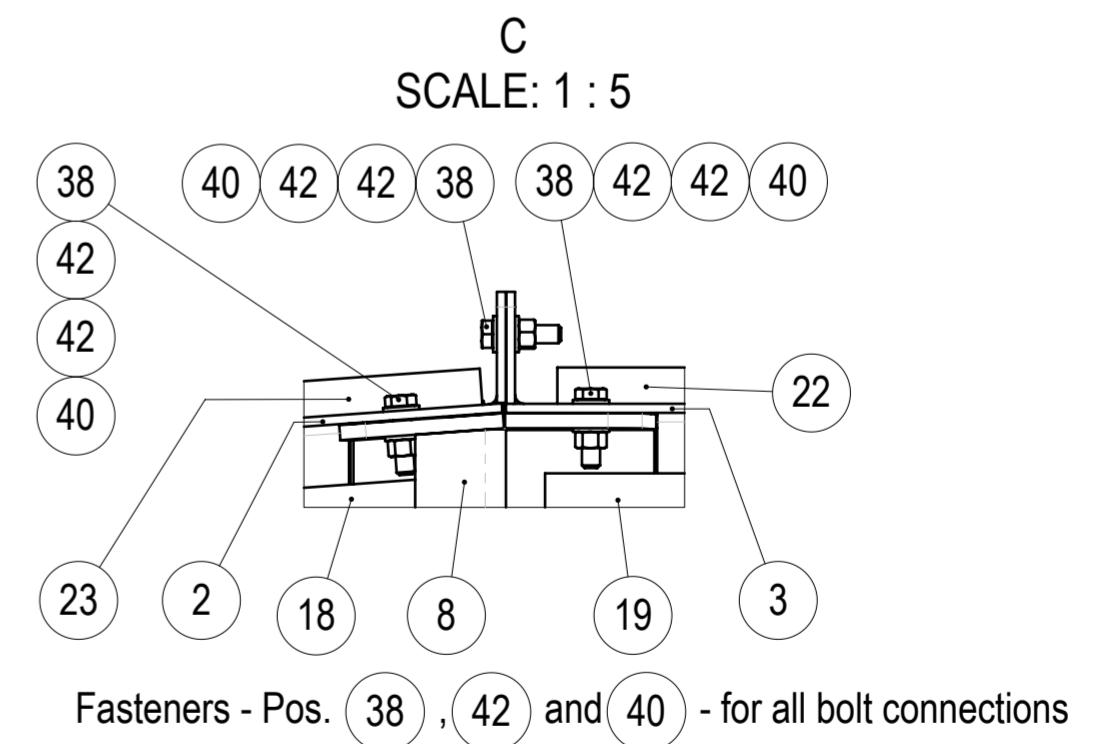
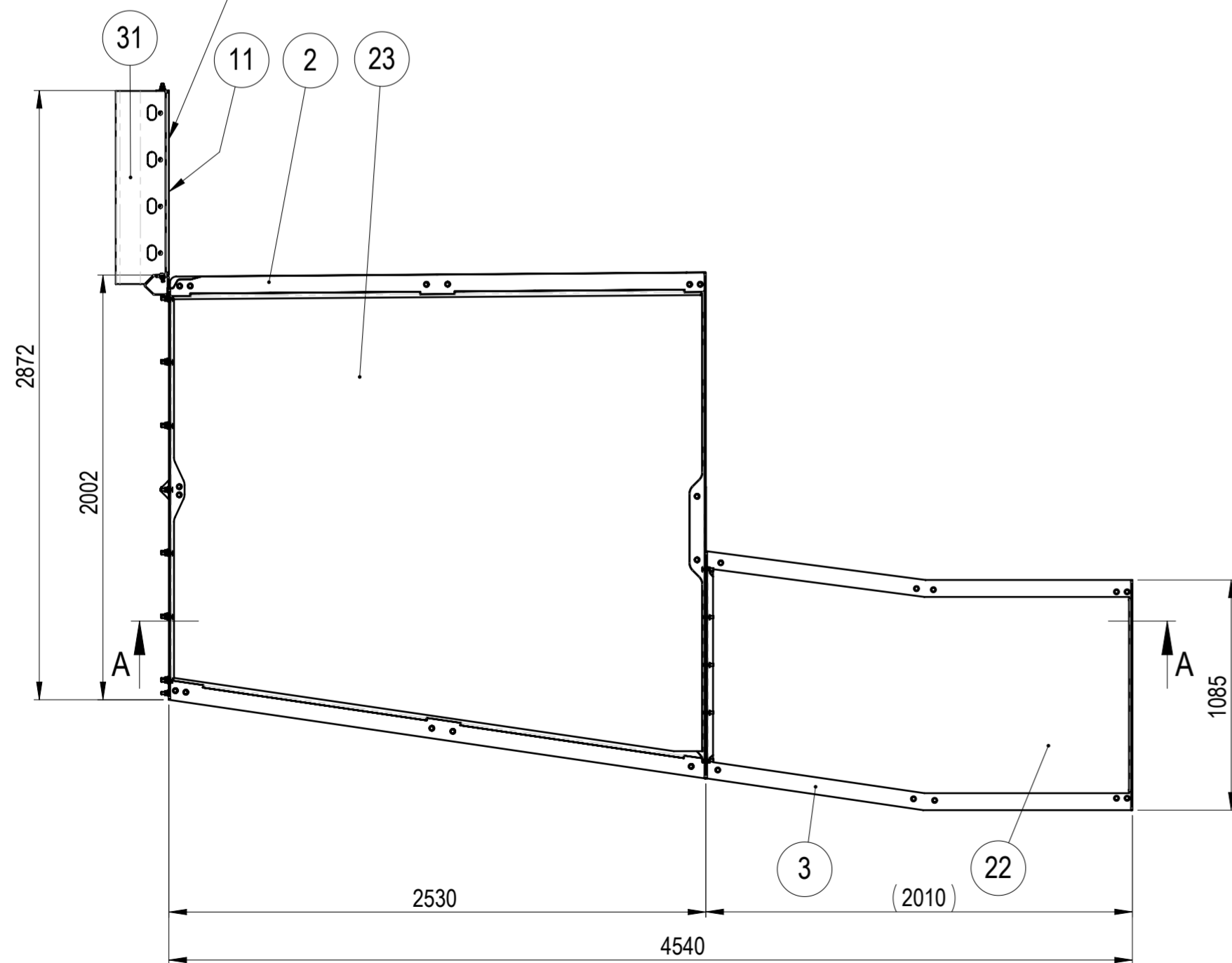


NO.	PART NO	DESCRIPTION	MATERIAL	PROCESSING	REVISION	WEIGHT	QTY
1	105-04301-00	Bottom Frame	-	WLD HDG		177.06	1
2	105-04302-00	Top Frame 1	-	WLD HDG		78.24	1
3	105-04303-00	Top Frame 2	-	WLD HDG		50.37	1
4	105-04304-00	Column 1	-	WLD HDG		35.37	2
5	105-04306-00	Connection 1	-	WLD HDG		11.97	2
6	105-04307-00	Column 3	-	WLD HDG		35.26	1
7	105-04308-00	Column 4	-	WLD HDG		35.26	1
8	105-04309-00	Column 5	-	WLD HDG		48.31	1
9	105-04310-00	Column 6	-	WLD HDG		143.82	1
10	105-04311-00	Column 7	-	WLD HDG		35.38	1
11	105-04312-00	Connection bracket	-	WLD HDG		9.60	1
12	105-04313-00	Column 8	-	WLD HDG		34.31	1
13	105-04314-00	Column 9	-	WLD HDG		34.28	1
14	105-04315-00	Column 10	-	WLD HDG		37.45	1
15	105-04316-00	Column 11	-	WLD HDG		32.18	1
16	105-04317-00	Column 12	-	WLD HDG		76.16	1
17	105-04300-01	Side Plywood Sheet 1	Plywood Riga Form (laminated)	OTH		30.40	1
18	105-04300-02	Side Plywood Sheet 2	Plywood Riga Form (laminated)	OTH		40.16	1
19	105-04300-03	Side Plywood Sheet 3	Plywood Riga Form (laminated)	OTH		34.01	2
20	105-04300-04	Side Plywood Sheet 4	Plywood Riga Form (laminated)	OTH		31.21	2
21	105-04300-05	Side Plywood Sheet 5	Plywood Riga Form (laminated)	OTH		40.37	1
22	105-04300-06	Top/Bottom Plywood Sheet	Plywood Riga Form (laminated)	OTH		21.23	2
23	105-04300-07	Top Plywood Sheet	Plywood Riga Form (laminated)	OTH		57.59	1
24	105-04300-08	Bottom Plywood Sheet 1	Plywood Riga Form (laminated)	OTH		49.17	1
25	105-04300-09	Bottom V Bracket	S355JR	LCB HDG		21.93	1
26	105-04300-10	V Plywood Sheet	Plywood Riga Form (laminated)	OTH		72.64	2
27	105-04300-11	Top V Bracket	S355JR	LCB HDG		7.43	2
28	105-04300-12	Side Plywood Sheet 6	Plywood Riga Form (laminated)	OTH		38.28	1
29	105-04300-13	Fairing H1	DX51+Z275	LCB		5.16	1
30	105-04300-14	Fairing H2	DX51+Z275	LCB		5.12	1
31	105-04300-15	Fairing H3	DX51+Z275	LCB		4.95	1
32	105-04300-16	Shimplate 2mm	DX51D+Z275	LC		0.14	2
33	105-04300-17	Bottom Plywood Sheet 2	Plywood Riga Form (laminated)	OTH		6.53	1
34	105-04300-18	Fairing V1	DX51D+Z275	LCB		15.34	1
35	Loctite 243	Threadlocking adhesive medium strength 15ml	-	COTS		0.00	1
36	Niczuk_81220025005_815mm	All purpose perforated band	-	COTS CAND		0.11	2
37	DIN 571 d6x30	Hex head wood bolt	EZn	COTS		0.01	96
38	ISO4017 (DIN933) M12x45	Hex bolt	HDG-8.8	COTS		0.06	91
39	ISO4032 (DIN934) M8	Hex nut	FlakeZn-8	COTS		0.01	32
40	ISO4032 (DIN934) M12	Hex nut	HDG-8	COTS		0.02	91
41	ISO7089 (DIN125) M8	Plain Washer	FlakeZn-HV200	COTS		0.00	64
42	ISO7089 (DIN125) M12	Plain Washer	HDG-HV200	COTS		0.01	182
43	ISO7093 (DIN9021) M6	Large plain washer	EZn-HV200	COTS		0.00	96
44	ISO7380-1 M8x25	Hex socket button head screw	FlakeZn-10.9	COTS		0.01	32
45	Wood screw d4x25	SPAX Flange head Cross Z2	EZn	COTS		0.00	24
46	Wood screw d5x25	SPAX Flange head Cross Z2	EZn	COTS		0.00	352

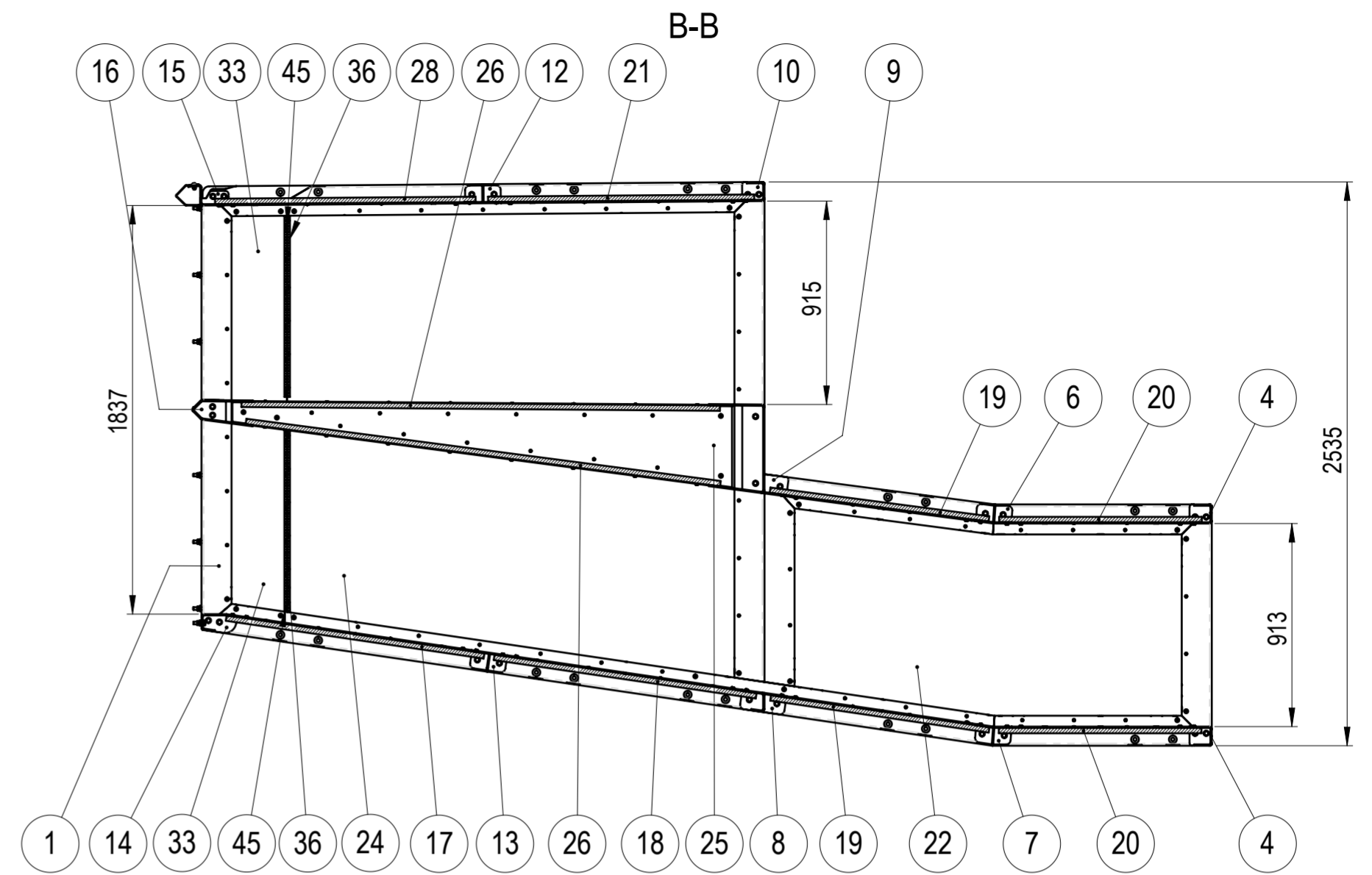
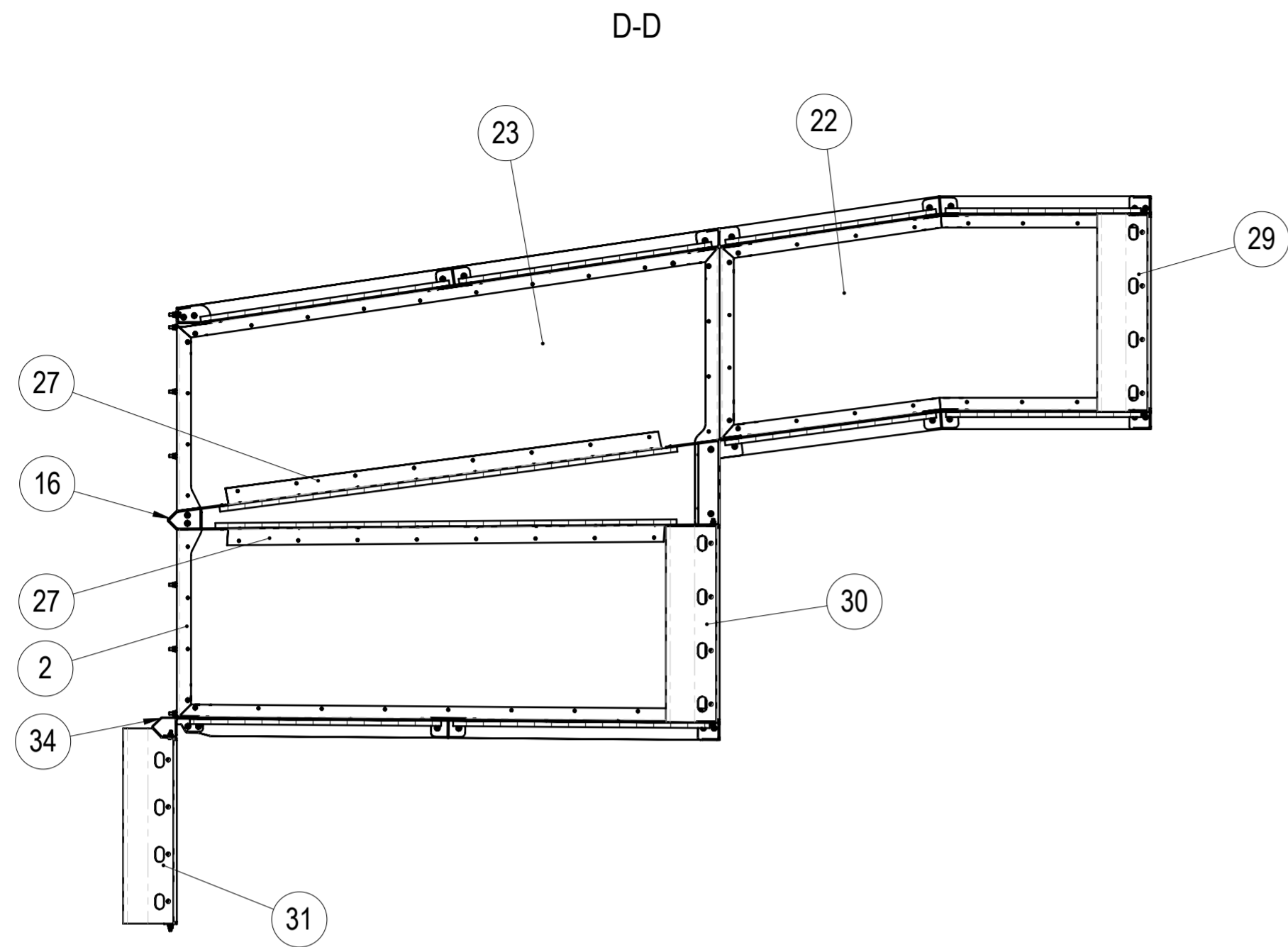
<b>WEMPS</b> ENGINEERING SERVICES		MATERIAL	WEIGHT	DEBURR AND BREAK SHARP EDGES	REVISION	DATE
		-	1582.054 Kg	DO NOT SCALE DRAWING		15.04.2025
		SURFACE PROTECTION	MACHINING	THERMAL CUTTING	WELDING	SCALE
		-	ISO 2768 mK	ISO 9013 441	ISO 13920 BF	1:20
NAME	SIGNATURE	PART NO.		REVISION		DATE
Designed by	E. Kriviss	105-04300-00				15.04.2025
Drawn by	E. Kriviss	DESCRIPTION				SCALE
Technical ref.		Return channel duct				1:20
						FORMAT
						A2
						SHEET 1/4



Notice notch on part (11), it has to point upwards, the part is not symmetrical!



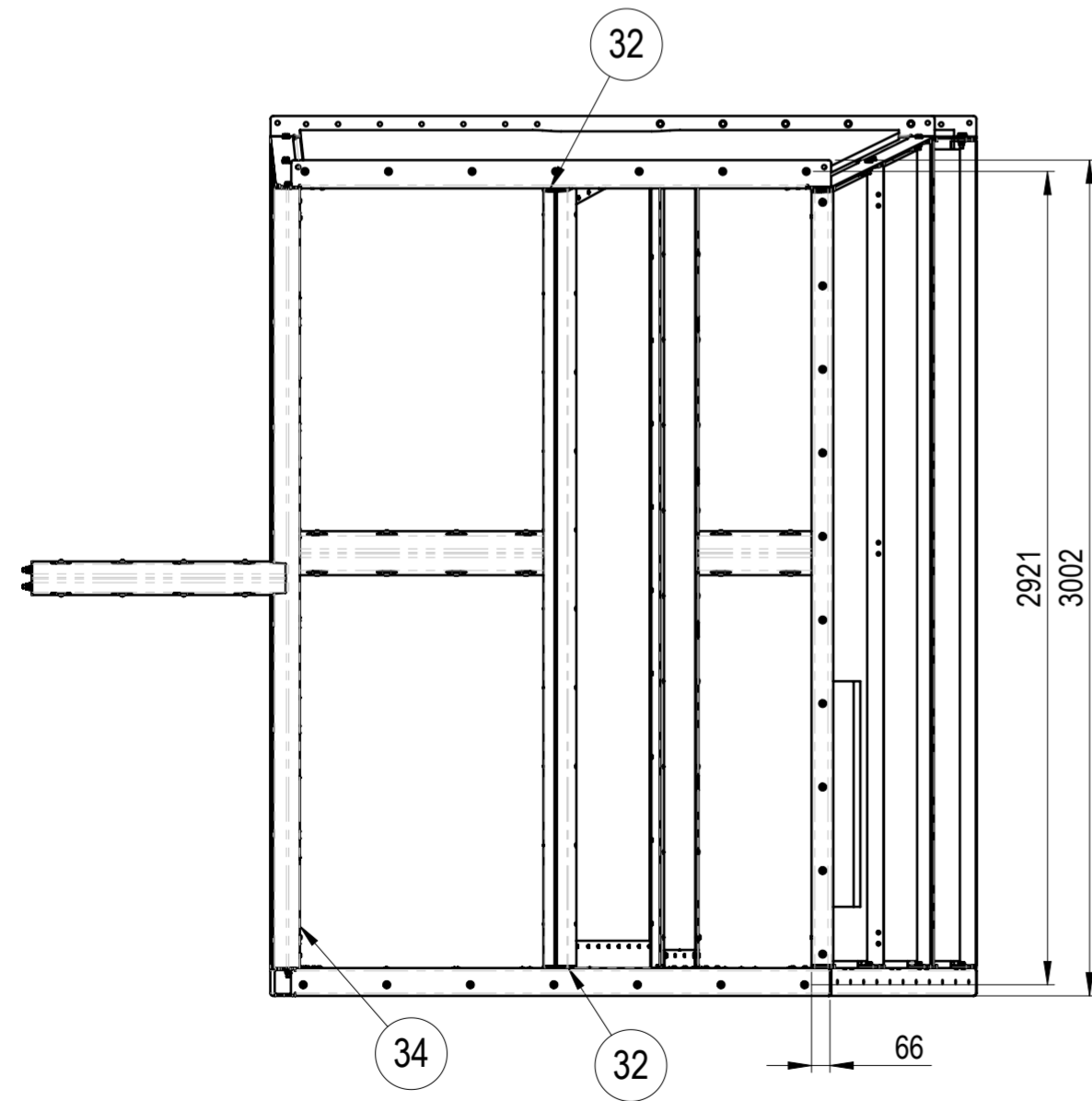
	MATERIAL	1582.054 Kg	DEBURR AND BREAK SHARP EDGES DO NOT SCALE DRAWING	REVISION	DATE
	SURFACE PROTECTION	MACHINING	THERMAL CUTTING	WELDING	SCALE
	-	ISO 2768 mK	ISO 9013 441	ISO 13920 BF	FORMAT
NAME	SIGNATURE	PART NO.	105-04300-00		
Designed by	E. Kriviss	DESCRIPTION	Return channel duct		
Drawn by	E. Kriviss	Technical ref.			
					SHEET 2/4



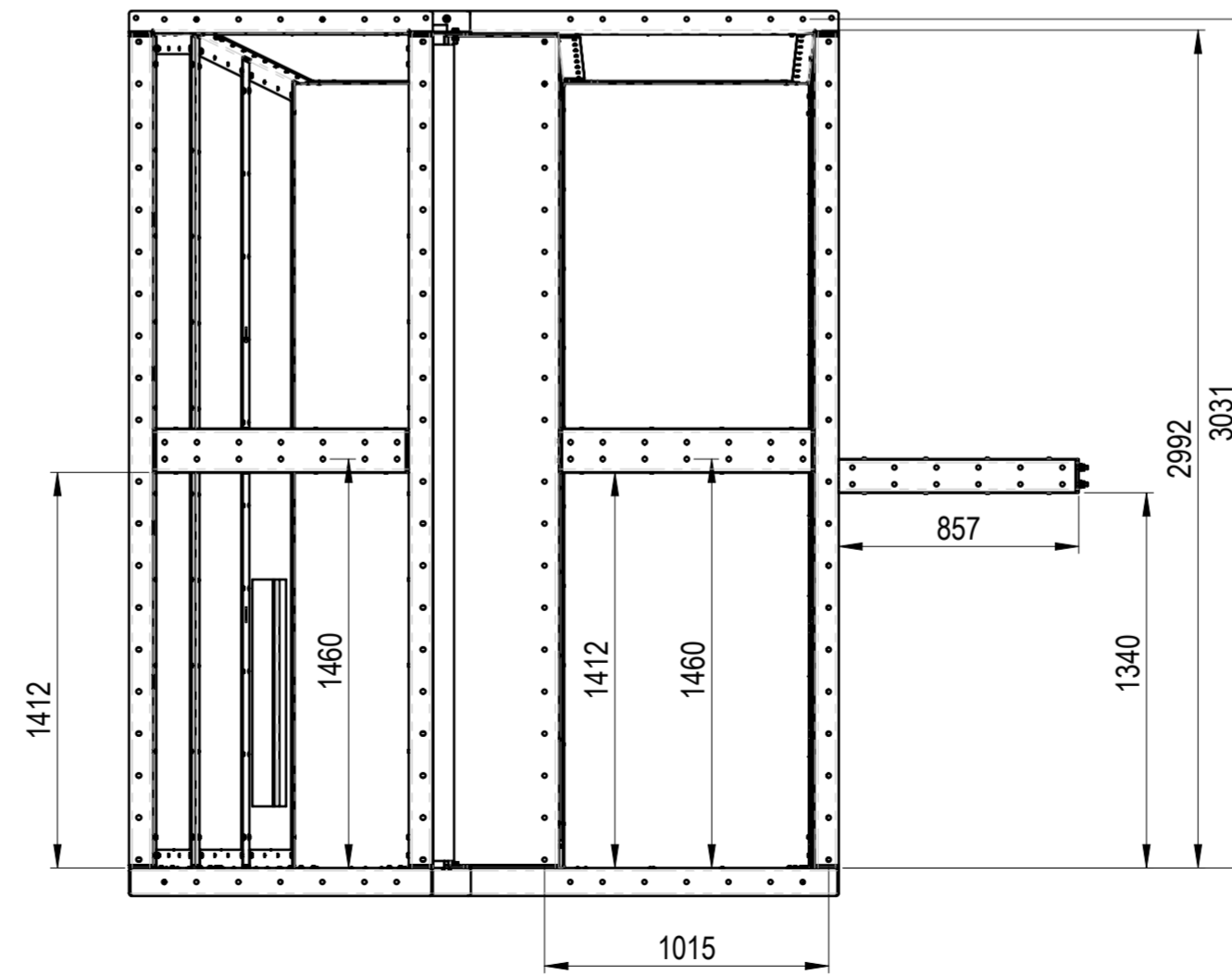
Install Plywood ( 33 ) only after Air duct is fastened to the adjacent steel structure.

Secure with steel strap ( 36 ) and wood screws ( 45 )

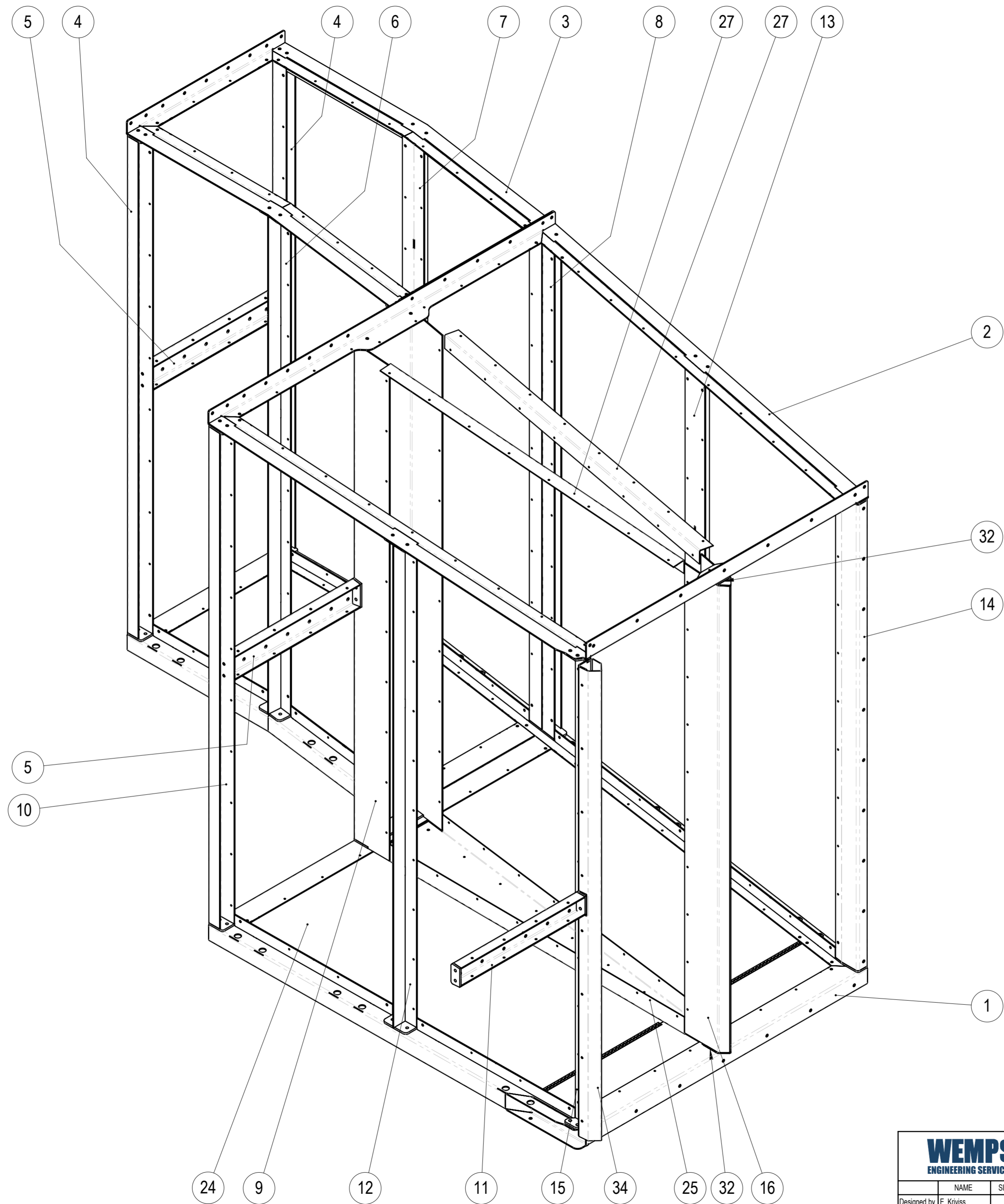
E



F



	MATERIAL	WEIGHT	DEBURR AND BREAK SHARP EDGES	REVISION	DATE
	-	1582.054 Kg	DO NOT SCALE DRAWING		15.04.2025
	SURFACE PROTECTION	MACHINING	THERMAL CUTTING	WELDING	SCALE
-	ISO 2768 mK	ISO 9013 441	ISO 13920 BF	1:25	FORMAT
NAME	SIGNATURE	PART NO.	105-04300-00		
Designed by	E. Kriviss		Return channel duct		
Drawn by	E. Kriviss				
Technical ref.					SHEET 3/4



		MATERIAL	WEIGHT	DEBURR AND BREAK SHARP EDGES	REVISION	DATE
		-	1570.941 Kg	DO NOT SCALE DRAWING		15.04.2025
		SURFACE PROTECTION	MACHINING	THERMAL CUTTING	WELDING	SCALE
		-	ISO 2768 mK	ISO 9013 441	ISO 13920 BF	1:15
		PART NO.	105-04300-00			
Designed by E. Kriviss Drawn by E. Kriviss Technical ref.		DESCRIPTION		Return channel duct		SHEET 4/4